



Spirolyser X5

Spirometry

Portable desktop spirometer

Digital Fleisch type sensor

Large and bright LCD screen

Very fast integrated printer

Memory and transfer to PC

Tests VC, FVC, MMV, Post-med.

Remarkable ergonomoy and design

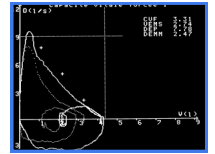
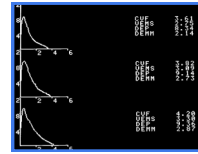
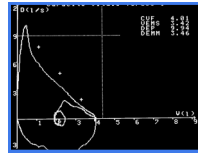
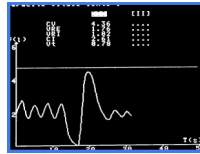
Use

The *Spirolyser X5* is a professional desktop spirometer designed for working comfort that is obvious right from the beginning.

Its large and bright LCD screen clearly displays results and curves in real time, thus facilitating the choice of best test. The shape of the flow/volume curve is well visualized.

The 110 mm rapid, integrated printer prints the best test or the three tests performed by the patient, with a view to later validation.

The internal memory can store a large number of tests so as to compare them later or transfer them to a P.C.



Ergonomy

The sensor handle is designed to be firmly held, without interfering with the measurement.

Each part of the sensor can be easily dismantled for complete sterilization of parts soiled by expiration.

Used with a bacterial filter, the Spirolyser sensor considers hygiene concerns, so as to efficiently fight against the risks of cross contamination.

The *Spirolyser X5* can be placed on a desk or hung from a wall; especially useful for working from vans or cramped premises.

As an option, the *Spirowin* software, installed on a PC, permits use of the X5 sensor directly from a P.C. or via an RS-232 serial port.



Technique

The measurement procedure is known to all lung specialists; in fact, the Fleisch type sensor is reputed for its precision as well as for its sharpness of measured results, including very small flows.

This sensor is perfected by an ATS testing bench, true artificial lung used as an international reference.

Furthermore, it has a very long lifespan as it does not use any part susceptible to wear and tear over time.

The sensor can be sterilized by soaking in an antibacterial liquid.

Calibration is carried out simply by using a calibrating syringe.

Features

Sensor	Digital temperature regulated <i>Fleisch</i> type Pneumotachograph		Standard accessories
Flows	- 11 l/s to + 14 l/s resolution 12 bits		Spirometer
Volumes and precision	0 to 10 litres +/- 3%		Mains lead
Screen	Large LCD graphic screen 320 x 240 pixels high resolution backlight		1 nose-clip
Printer	Very fast 110 mm thermal		2 rolls of paper
Weight	Approximately 2Kg		1 filter
Other	Auto date, 150 tests memorized, transfer onto PC, calibration, management of calibrations		Instructions notice
Supply	Mains 110 - 240v 50-60 Hz		Optional accessories
Correction	BTPS, temperature, Hygrometry, Atmos. pressure		P.C.
Predictive norms	Eccs, Eccs/Knudson, Knudson, ITS		Printer
Interpretation	IUMT Grenoble	Calibration syringe	
Tests	Slow vital capacity, forced, minute ventilation, post-medication	Bacterial filters	
Curves	Vital capacity, Flow/volume loop, volume/time, MMV, post-medication, theoretical curves	Transport case	
Conformity	CE 0398	Software for PC	
Recommendations	ATS		



Address 30 Rue Camille 69003 Lyon France
Phone +33 (0)4 72 34 89 89
Fax +33 (0)4 72 33 43 51
Web Site <http://www.fim-medical.com>