



Visiolite®

Visiolite®
master

Visiolite®
modulus

Visiolite®
essential
"one click one test"



Automated range of devices for screening
and exploration of visual function

www.fim-medical.com



The Visiolite® Range

The Visiolite device is intended for occupational health services and preventive medicine specialists. This machine of optical, electronic and computer engineering high technology measures visual acuity and screens for visual problems.

Compact

lightweight and easy to transport, the Visiolite contains a large range of tests.

Adapted

to wearers of progressive lenses, to move from far vision to near vision effortlessly, simply by lowering the eyes. 1

Ergonomic

the Visiolite inclines to adapt to the patient, rather than vice-versa. It is also inclined for transportation, and to access connection leads.

Automated

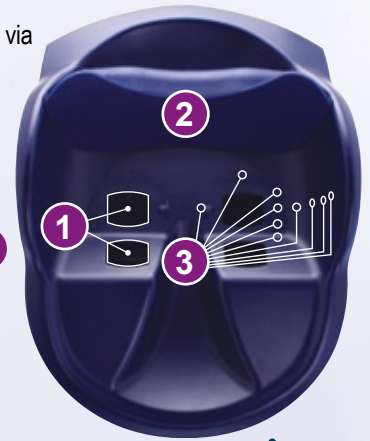
no buttons or thumb wheels. The Visiolite is entirely fingertip remote-controlled, via either a remote control or software, with the click of a mouse.

Fast

silent: requires just a few minutes to perform a test.

Intelligent

to ensure correct facial position, a detection sensor 2 lights up the tests only when the forehead is in contact with the mobile forehead piece. A group of 20 LED 3 sweeps the horizontal (temporal and nasal) and vertical visual fields.



Computerised or remote-controlled solutions designed for your needs.

**Visiolite®
essential**
"one click one test"

Visiolite Essential: operated by its ergonomic and user-friendly remote control «1 click 1 test», this model offers 11 tests for quick and precise screening of the principal visual problems.

**Visiolite®
modulus**

Visiolite Modulus: operated by the Visiolite software, this model offers 14 tests, with all the advantages of computer engineering (data base access, programming of sequences, ergonomomy and user-friendly interface).

**Visiolite®
master**

Visiolite Master: operated by the Visiolite software or by the remote control with programmable LCD screen, this model is characterised by its 18 tests, and its different modes of operation. This model integrates and places at your disposal our entire knowledge in the visual domain.





Compare the models and choose what is best for you!



ACUITY

LANDOLT RINGS-	BINO OR MONO	**	●	●
NUMBERS -	BINO OR MONO		●	●
LETTERS -	BINO OR MONO		●	●
LETTERS LOW VISION -	BINO	Choice of 3 colours	●	●

SUPPLEMENTARY TESTS

ASTIGMATISM	● *	●	●
RED/GREEN DUOCHROME	● *	●	●
STEREOPSIS		●	●
VERTICAL AND HORIZONTAL PHORIAS	● *	●	●
FUSION			●
ISHIHARA TYPE COLOURS TEST	● *	●	●
DAISY TYPE COLOURS TEST			●
AMSLER GRID		●	●
CONTRAST SENSITIVITY			●
HYPEROPIA TEST (LENS+ 1 DIOPTRY)	●	●	●
HORIZONTAL AND VERTICAL VISUAL FIELD	●	●	●

FEATURES / FUNCTIONS

DISTANCE				
FAR VISION	●	●	●	●
INTERMEDIATE VISION	●			●
NEAR VISION	●	●	●	●
LUMINOSITY				
HIGH PHOTOPIC	●	●	●	●
LOW PHOTOPIC		●		●
MESOPIC (NIGHT VISION)	●			●
Bluetooth® OPTION		●		●


OPERATING MODE



* Far vision only

** The colours represent optotype configurations available on the Essential, the choice depends on your needs.

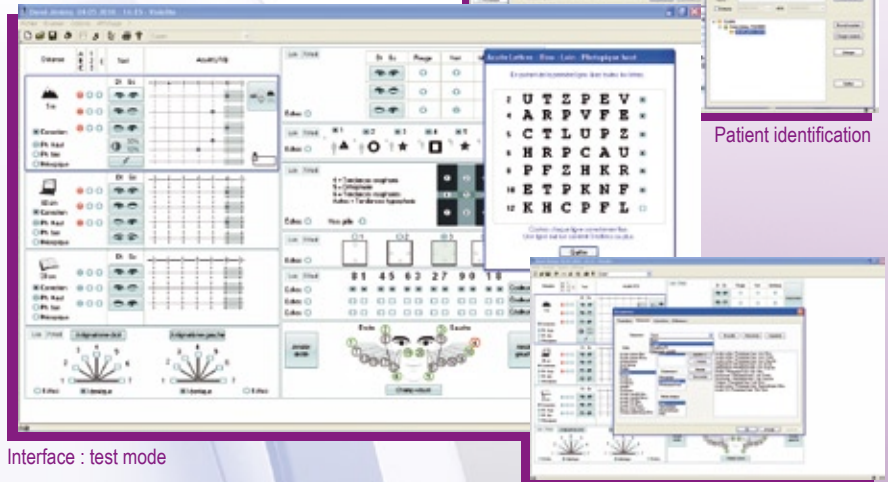
Visiolite V4 software: PC interface

The Visiolite V4 software operates the instrument in USB and  Bluetooth® mode. Its user-friendly, ergonomic interface ensures quick and efficient use, so as to perform your tests in a few minutes.

Visiolite V4 is designed to be customised to your test preferences. Several parameterings are available:

- Programming of test sequences in order to adapt the tests according to the occupational hazards of each patient (or depending on other criteria)
- Parametering of tests (optical mode, luminous intensity)
- Personalisation of instructions given by the operator to the patient
- Interface mode for export of medical results
- Selective printing of tests ...

Compatible: Windows 2000, XP, Vista and Seven



Interface : test mode

Patient identification

Parametering

Accessories & Options

The FIM company reserves the right to modify, without prior notice, the features and performances of the Visiolite.

Standard Accessories

- 1 user manual
- 1 power plug
- 1 forehead piece
- 1 optical microfibre

Essential Version

- 1 Essential remote control
- 1 pad of 100 response forms
- 1 table of responses

Modulus Version

- 1 Visiolite software
- 1 USB lead

Master Version

- Computerised
- 1 Visiolite software
- 1 USB lead

Remote-Controlled

- 1 pad of 100 response forms
- 1 table of responses

Optional Accessories

- Computer equipment
- Transport case
- Metallic transport case
- Pad of 100 response forms
- Optical microfibre
- Forehead piece



General Features:

Operating option	Master Modulus Version: Visiolite Software USB lead and wireless Bluetooth connection
	Master Version: Remote control with back-lit screen
	Essential Version: Remote control «one click one test»
	Microlyser II with graphic, back-lit screen and printer
Height	Device in working position: 50cm maximum
Width	Maximum width at base: 26cm
Weight	Without operating system: 4.7 kg (without remote control)
Luminous Intensity	Maximum: 200 candelas/m2. Progressive increase in intensity
Lighting system	Lighting with 16 white LEDs, operated by microcontroller and diffuser system
Distances	Far vision 5m Intermediate vision 60 cm Near vision 33 cm
Test Band	High definition photographic film
Reactivity	Time between 2 neighbouring tests: 2 seconds Time to go from one lens to another: 1.5 seconds
Test Time	Routine Test: 2 minutes Extended Test: 4 minutes

Electrical Features:

Electric class	Class III BF type supplied by power plug conforming to EN 60601 standard.
Voltage	11 to 15 V

Conformity:

Standards	Test specifications defined according to data of the NF EN ISO 8596 Ophthalmic Optics standard, visual acuity testing, standard Optotype.
CE Marking	Class I medical device according to 93/42/EC Directive
Safety	EN 60601-1 standard
Electromagnetic Compatibility	IEC 60601-1-2 standard



30 rue Camille
69003 LYON
FRANCE

Tel (00 33) 4 72 34 89 89
Fax (00 33) 4 72 33 43 51
contact@fim-medical.com

Your distributor :